

# Materials

- PCB: [HERE](#)
- FFC 45 pin 0.3 pitch cable (recommend 12cm)
- Wire

# software tutorial

**Important:** If you bought the modded wifi chip skip the software tutorial

Card used:



files:

[https://drive.google.com/drive/folders/19\\_DgJ1HDe8p6e1rp6A364Wr27AqCC4J-?usp=sharing](https://drive.google.com/drive/folders/19_DgJ1HDe8p6e1rp6A364Wr27AqCC4J-?usp=sharing)

includes the software of the card

STEPS:

- unzip all files inside the software paste to the card on the console open the card and select 'flash me' (edited)



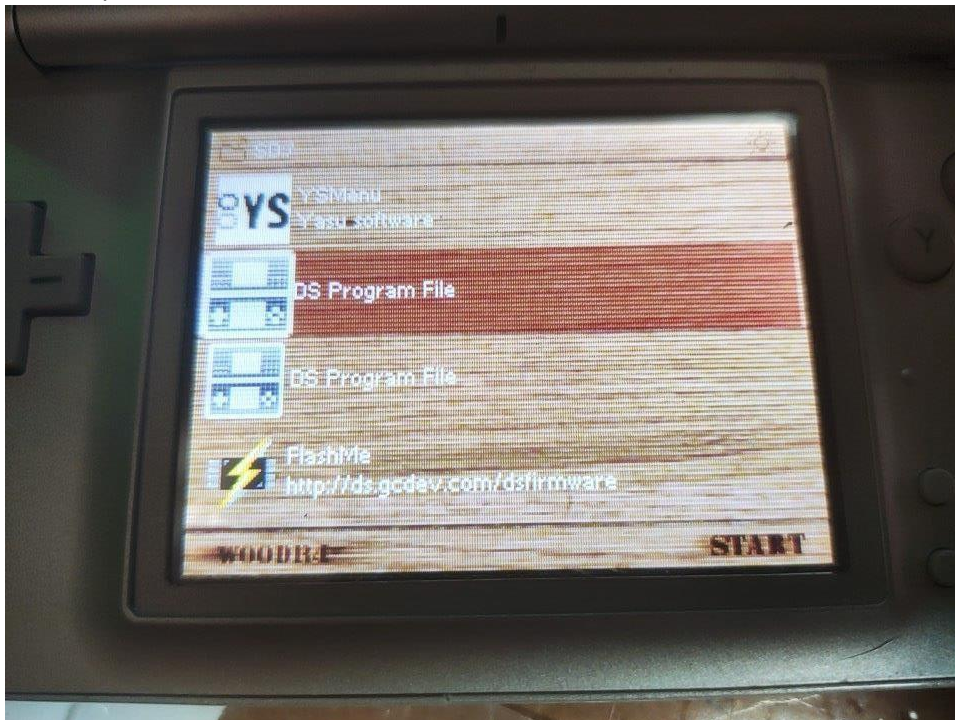
- Start and it will indicate you to short this (SL1) while it flashes



Warning: Don't Turn off the console while flashing. You might brick it

Afterwards go to the 1st program

The dumper

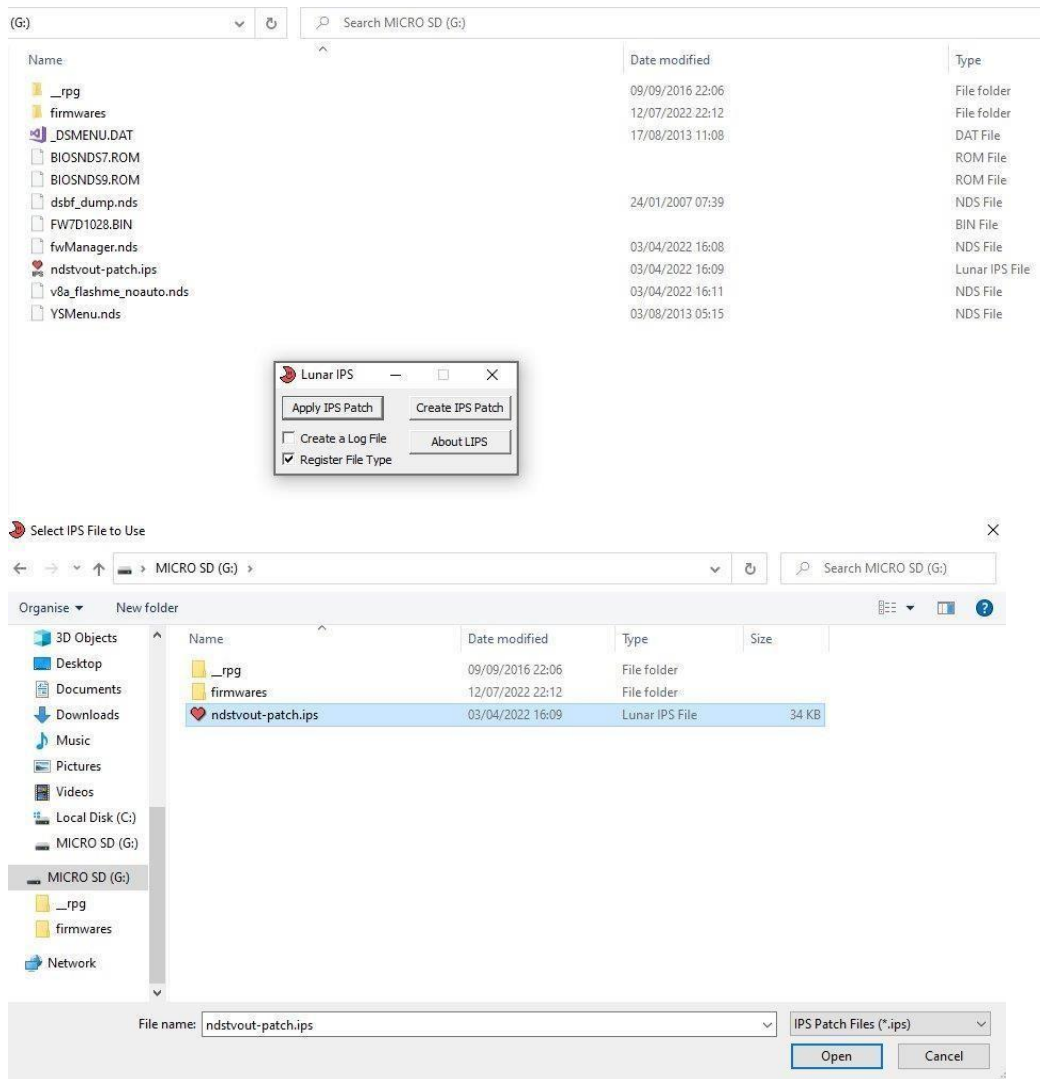


You'll gain 3 files now install Lunar ips

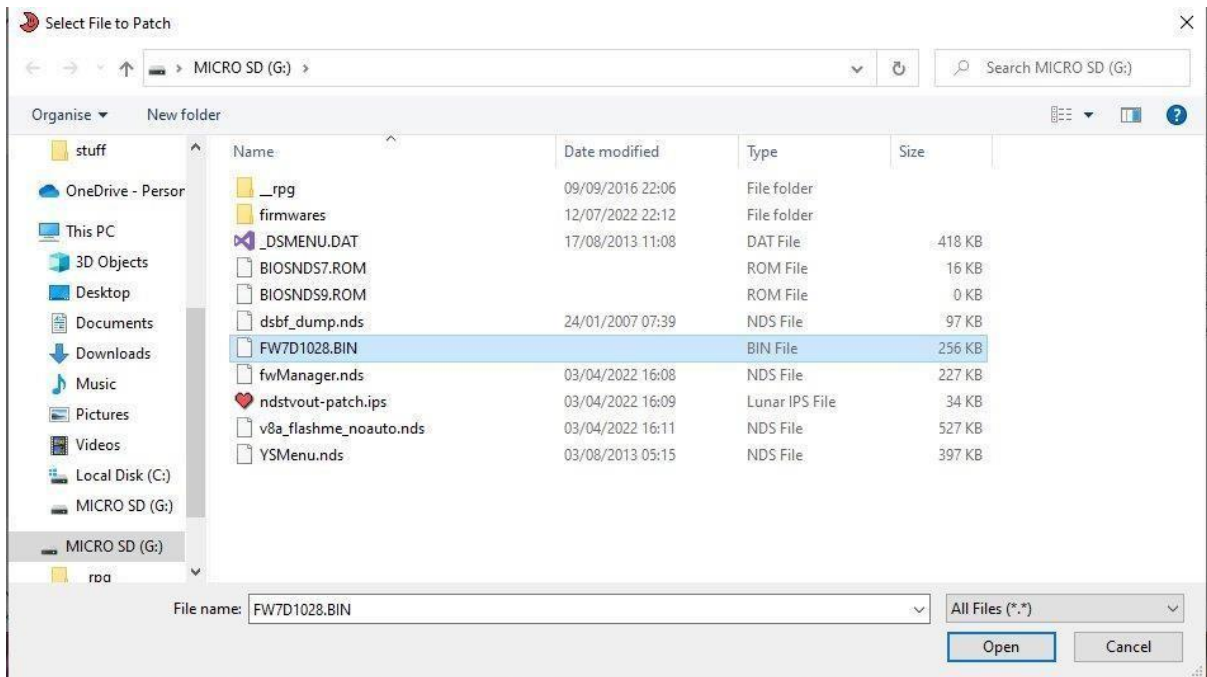
[\(https://www.romhacking.net/utilities/240/\)](https://www.romhacking.net/utilities/240/)

Open lunar ips

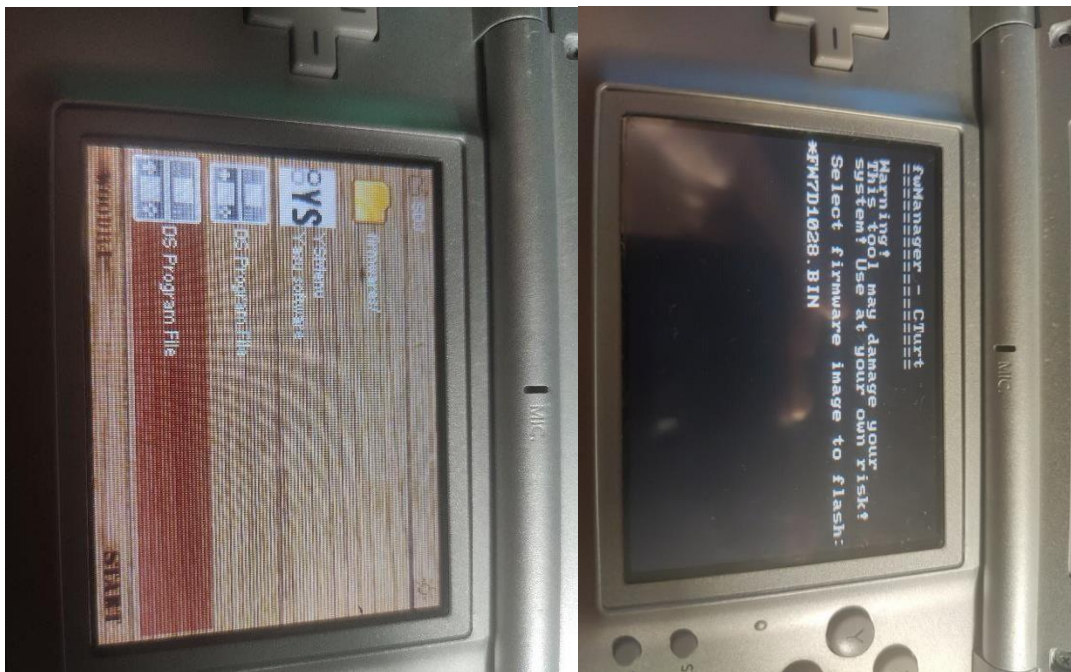
Click apply patch



then at the bottom right select 'All files' and select the .BIN you got



now drag that updated .BIN to the firmwares pasta now select the second program



It will indicate when finished

Do not Turn off power until it is over

After finishing Turn off the DS

When restarting the top screen should be Yellow

That will indicate the software was done correctly

Now it will be the hardware part

# Hardware tutorial

Before starting Complete the software install

Get the PCB: [HERE](#)

Step 1:

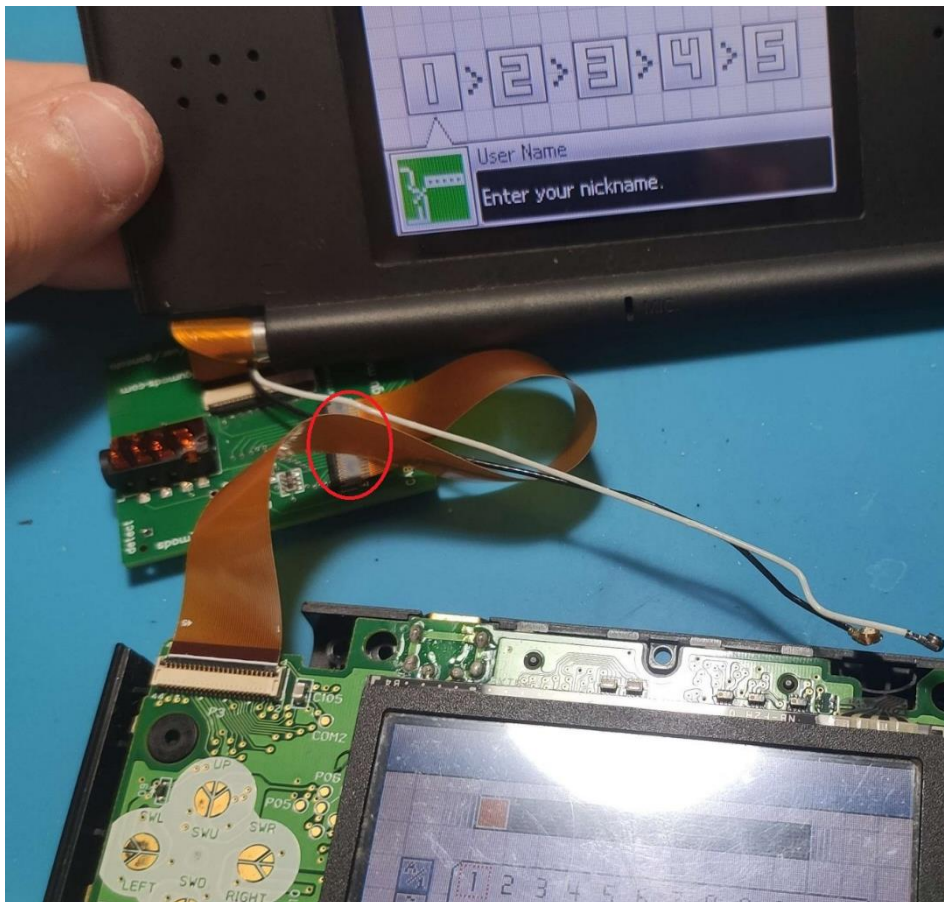
- Disassemble the console

Step 2:

- Disconnect the top screen

Step 3:

- Connect one end the ffc cable to where the top screen connector on the console and the other to the pcb (on the pcb the cable is inserted with the pins up)
- Now Connect the top screen to the pcb



**Congrats you just completed the mod**

**Optional extra steps**

- For an automatic mode change you can request a custom module to change modes automatically

OR

- If you are a confident Modder you can implement an SL1 shorter method (button, switch, ....) to allow you to switch between normal software and custom firmware by simple us of a R4 with a click

OR

- It hasn't been fully tested but you can short SL1 permanently with solder or wire and just alter the mode with the program

Additional notes:

With the normal software the top screen will work as normal.

With the custom software the screen will display a more yellowed image.